



## HUNTER RESIDENCES PROGRAM NSW

The Hunter Residences Program will deliver 69 new homes for people with disabilities in NSW, helping to support people moving out of large residential institutions in the Hunter Valley.

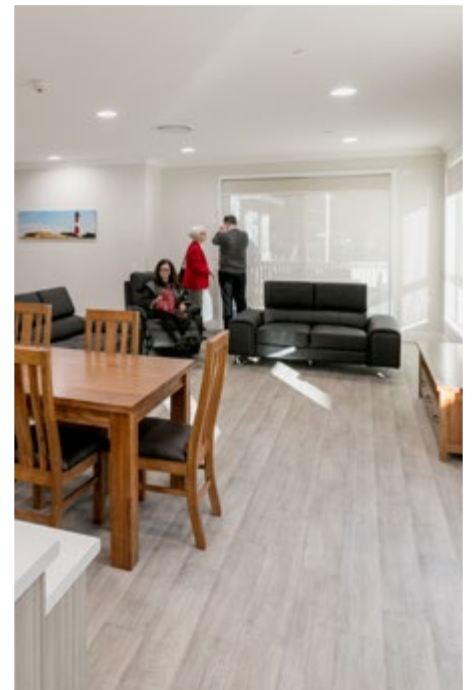
The new homes will provide community based accommodation and appropriate supports, to ensure people get the best possible care in their new homes.

It is the first project to be funded by the Specialist Disability Allowance, which is being made available under the National Disability Insurance Scheme.

BlueCHP is partnering with Compass Housing and Lighthouse Infrastructure Fund, under the Home4Life consortium, which was selected by the NSW Government to deliver the project.

Compass Housing will provide tenancy management services and Lighthouse Infrastructure Fund will finance the \$170 million project.

BlueCHP is currently the largest developer of SDA housing in Australia through the Home4Life joint venture.



### PROPERTY PROFILE

<b>TYPE</b>	Design, construction and management
<b>BUILD</b>	69 new community based homes with appropriate supports
<b>DELIVERY</b>	Specialist Disability Accommodation

#### NEW SOUTH WALES OFFICE

Suite 3A, 12 O'Sullivan Road, Leumeah NSW 2560  
Ph 02 4621 8600 Email [office@bluechp.com.au](mailto:office@bluechp.com.au)

#### QUEENSLAND OFFICE

Unit 9, 76 Doggett Street, Newstead QLD 4006  
Ph 07 3480 0082 Email [qldoffice@bluechp.com.au](mailto:qldoffice@bluechp.com.au)

ABN 78 128 582 383